

Rocky Mountain Round Up

All Breed *STOCK TRIALS*

All breeds recognized by ASCA as herding breeds are eligible to enter the trials.

July 30, 31 & August 1, 2021



Latigo Trails Equestrian Center Outdoor Arenas

13710 Halleluiah Trail, Elbert, CO 80106

<https://www.atlatigo.com/home-1.html>

Entries Open June 21, 2021 and close July 19, 2021

6 Stock Trials

2 Trials Friday Course G

2 Trials Saturday Course A

2 Trials Sunday Course A

Colorado Australian Shepherd Association

President: Geri Scheidt

Vice President: Kim Edlin

Secretary: Alicia Christie

Treasurer: Wendy Summers

Board:

Claudia Yearsley, Terri Morgan, Becky Parker

<http://www.coloaussies.org/events.html>

Course Director: Geri Scheidt/Stacie Harris

Trial Secretary: Terri Morgan

Pre- Entries open June 21st close (postmark) July 19th, 2021

Checks payable to: CASA (Colorado ASA) and mail to

Entry Clerk: Geri Scheidt

PO Box 556

Kiowa, CO 80117

303-243-0833

scheidt.g@outlook.com

Entry Fees:

	Pre-Entry <i>Post-Mark by 7/19</i>	Day of Trial <i>(if available)</i>
Ducks	\$ 35.00	\$ 40.00
Sheep	\$ 45.00	\$ 50.00
Cattle	\$ 55.00	\$ 60.00
Same dog all 3 stock /trial	\$120.00	\$ 135.00
All Trials/All Stock same dog	\$ 660.00	\$750.00





GENERAL INFORMATION

These are ASCA sanctioned shows and all ASCA rules apply (www.asca.org). Dogs over 6 months of age must have proof of ASCA registration available. CASA, the Course Director and club members assume no responsibility for any loss, damage or injury sustained by any exhibitor, handler, dog, property, children or spectator. All dogs must be crated or leashed except while competing.

Entry fees will not be returned if the trials cannot be opened or be completed due to riots, civil disturbances, acts of God, public emergencies or other events beyond the control of CASA. Entry fees will not be refunded if the dog is absent, disqualified, excused or barred from competition by the Show Committee, ASCA, show veterinarian or the judge.

All entries must be on the official ASCA entry form with proper fees included. Exhibitors are responsible for the accuracy of the entry and the class entered. Withdrawal of entries will be accepted until the pre-entry closing date.

Returned checks do not constitute a valid entry and there will be a \$38.00 service fee on all returned checks. Entry into future shows/trials and participation in this show/trial will not be allowed until all fees are paid in cash or money order.

Information: Substitutions are allowed providing the dog is owned by same owner. Draw for run order will be after trial registration closes. Bitches in heat will run in order of draw but **must be crated and exercised away from the competition**. Overflow judges may be hired and the limit of runs per day as well as judging assignments may change. All breeds recognized by ASCA as herding breeds are eligible to enter the trial.

Stock to be used: 5 head ducks per run-Runner/Rouen, Runner/Blue Swedish crosses all trials, 3-5 head per run of wool and/or hair sheep and 3-5 head per run of 300 to 800# black angus or mixed calves. Owners of dogs will be responsible for all injuries to livestock; replacement cost per duck is \$50, per sheep is \$500, per cow is current market value.

Limit of 50 stock runs per TRIAL per judge.
You are responsible to be on site for your runs.

Any changes will be posted at the Trial Registration Desk in advance of the Trial starting.

Awards: Flat ribbons offered for all class placements

Ribbons and/or Awards for the following for each Day –

including combined scores for both Trials that day

H5 Ducks H5 Sheep H5 Cattle

H5 CH of Record – based on qualifying scores, Aussie Only

High Score Working Junior, High Score Open Working Junior

High Combined In Trials Aussie & Other Breed

High In Trial Aussie & Other Breed

Special Awards (no ribbons) for combined weekend totals:

High Combined WTCH – based on qualifying Advanced scores only

High Combined Non-WTCH based on qualifying Advanced scores only

High Combined Open – based on qualifying Open Scores only

Most Promising Started - based on qualifying Started scores only

LODGING: Hotels in Colorado Springs. Please verify respective hotel pet policy

When making reservations:

Comfort Inn North - 6450 Corporate Dr., C/S -719-262-9000

Days Inn Academy – 8350 Razorback Rd., C/S – 719-266-1317

Super 8 – 8135 N. Academy, C/S – 719-528-7100

Red Roof Inn – 8280 State Hwy 83, C/S – 719-598-6700

LaQuinta Inn – 4385 Sinton Rd, C/S – 719-528-5060



CAMPING: RV Parking is available on site. Electric and water, bring Y's to share the water. With electric hookups: \$20.00/night Dry \$5.00/night. No dump station on site. For more information and reservations, please contact Latigo Trails Heritage Centre at 719-495-0176



BRING SHADE, chairs, rain gear and water! There will be dog pools available.

Latigo Trails Equestrian Center has a restaurant and bar on site for all meals.

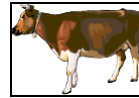
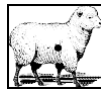
DIRECTIONS

USE GOOGLE MAPS for best directions from your location!

**Emergency Veterinarian:
Powers Pet Emergency
5956 Stetson Hills Blvd.
Colorado Springs, CO 80923
719-473-0482**

ON CALL

STOCK TRIAL SCHEDULE



**7:45 am Handler's meeting for both trials each day.
Entries/Moveups/Changes will be taken each day
between 7:30-7:45am and between trials.**

Friday 7/30/2021 Course G Trials 1 & 2

8:00am Trial Starts

Trial 1 Cattle	Judge David Clayton
Trial 1 Duck	Judge Marie Nagano
Trial 1 Sheep	Judge Brad Warren
Trial 2 Cattle	Judge Marie Nagano
Trial 2 Duck	Judge Brad Warren
Trial 2 Sheep	Judge David Clayton

Saturday 7/31/2021 Course A Trials 1 & 2

8:00am Trial Starts

Trial 1 Cattle	Judge Brad Warren
Trial 1 Duck	Judge David Clayton
Trial 1 Sheep	Judge Marie Nagano
Trial 2 Cattle	Judge David Clayton
Trial 2 Duck	Judge Marie Nagano
Trial 2 Sheep	Judge Brad Warren

Sunday 8/1/2021 Course A Trials 1 & 2

8:00am Trial Starts

Trial 1 Cattle	Judge Marie Nagano
Trial 1 Duck	Judge Brad Warren
Trial 1 Sheep	Judge David Clayton
Trial 2 Cattle	Judge Brad Warren
Trial 2 Duck	Judge David Clayton
Trial 2 Sheep	Judge Marie Nagano